

# Sheringham Travel Hub Public Realm Improvement Project

## Introduction

Sheringham Town Council are seeking views on proposed improvements to the public realm area of Station Approach (known as Ottendorf Green).

The proposals form part of a scheme being delivered by Norfolk County Council to provide a new Travel Hub for the town on Station Approach.

This work will be funded through the Government's Bus Service Improvement Plan (BSIP) which aims to improve bus services across the county and enhance passenger experience at key locations.

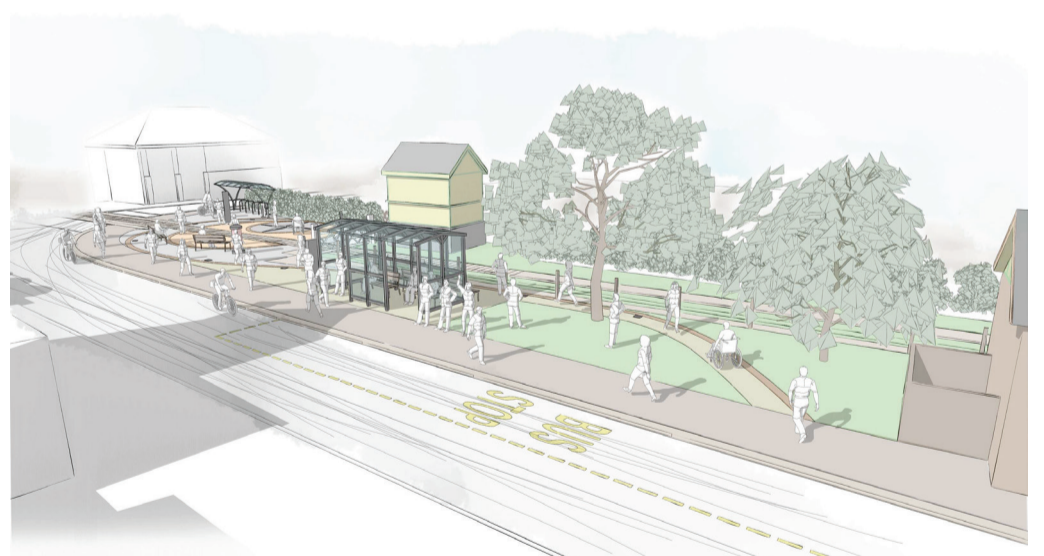
## Proposed changes

- Replacement of the existing brick bus shelter, providing improved safety and accessibility, with lighting and a larger waiting area for passengers
- Passenger travel information in real time via a digital screen
- A wider pavement on the south side of Station Approach, providing more space for waiting passengers and those passing on foot
- A new shelter for cycle parking, equipped with a cycle repair station.
- New seating areas and public information boards
- A water bottle filling station
- Enhancement of public realm areas to create a spacious meeting point and area that can be used for public events
- Soft landscaping
- Installation of a new bus shelter and widened footway at the western end of Station Approach (outside the putting green).

Photos of existing layout



Images of proposed new layout



## How to get involved?

If you wish to make any comments about the proposals please visit the project webpage below or email [TFNorfolk@norfolk.gov.uk](mailto:TFNorfolk@norfolk.gov.uk)  
Alternatively, come to one of our informal drop in sessions on Wednesday 14 May to find out more:

**10am – 12pm @ North Norfolk Railway (Station Buffet), Station Approach**

**1pm – 3pm @ Sheringham Community Centre (Downstairs Hall), Holway Road**

## Deadline

The deadline for comments is **Monday 26 May 2025**

## Next steps

Sheringham Town Council will review the responses and work with the county council and the designers to develop the final plans for construction. Any building work would be communicated in advance and conducted outside of the peak tourist season.