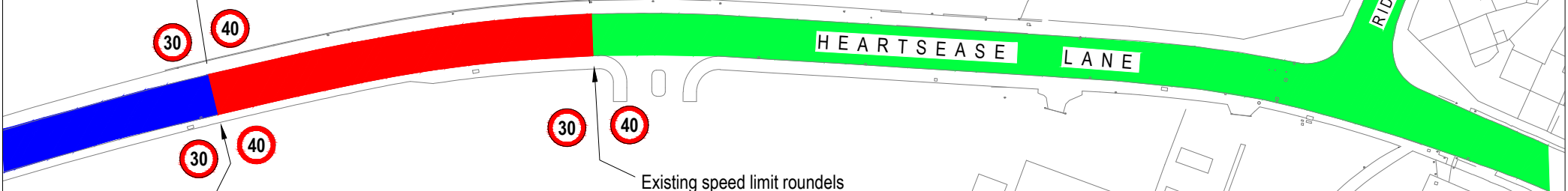


Speed limit roundels installed on existing lighting column.

Existing speed limit roundels on lighting column to be removed

86m

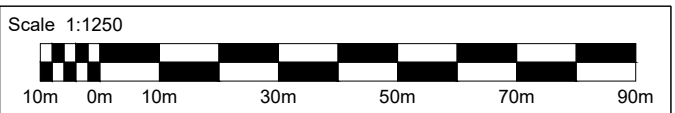


Speed limit roundels installed on new sign post.

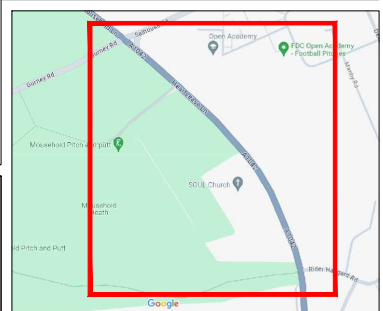
Existing speed limit roundels on post removed.

**KEY :-**

-  Proposed 30mph Speed Limit
-  Retained 40mph Speed Limit
-  Retained 30mph Speed Limit



© Crown copyright and database rights 2024. Ordnance Survey 100019340



**Grahame Bygrave**  
Interim Executive Director of  
Community and Environmental Services  
Norfolk County Council  
County Hall, Martineau Lane  
Norwich NR1 2SG

**DRAWING TITLE**  
30mph Speed Limit TRO plan

REV.	DESCRIPTION	DRAWN BY	CHECKED	DATE
001	TRO PLAN	PH	BS	07-08-24

SURVEYED BY	INITIALS	DATE	DRAWING No.
DESIGNED BY	-	-	45905/078
DRAWN BY	PH	07-08-24	PROJECT TITLE
CHECKED BY	BS	-	HEARTSEASE LANE
SCALE 1:1250 @ A4			FILE No.