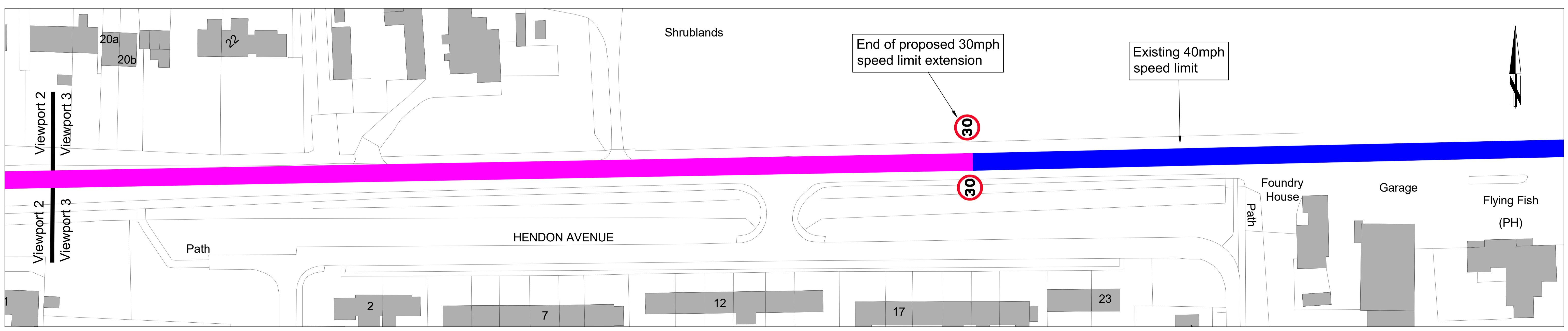
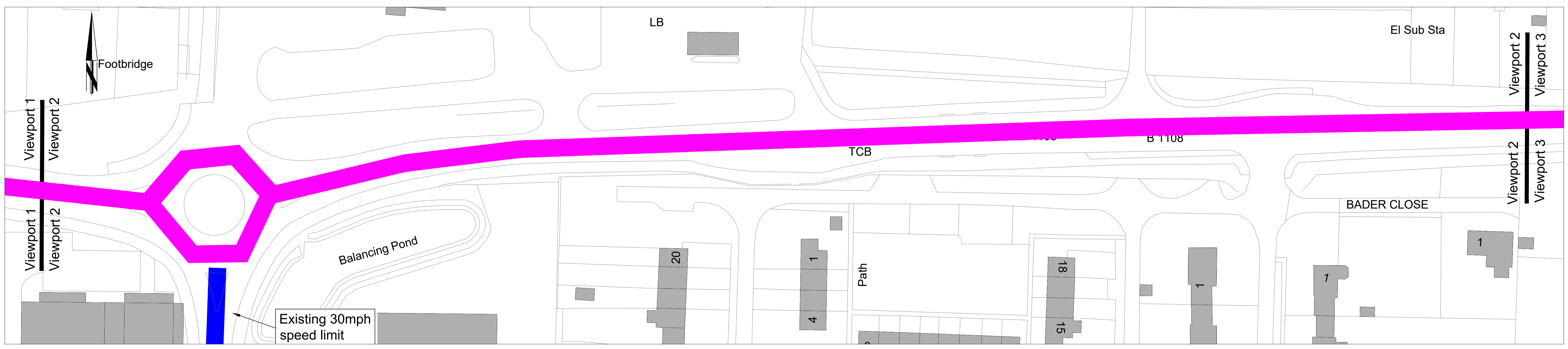
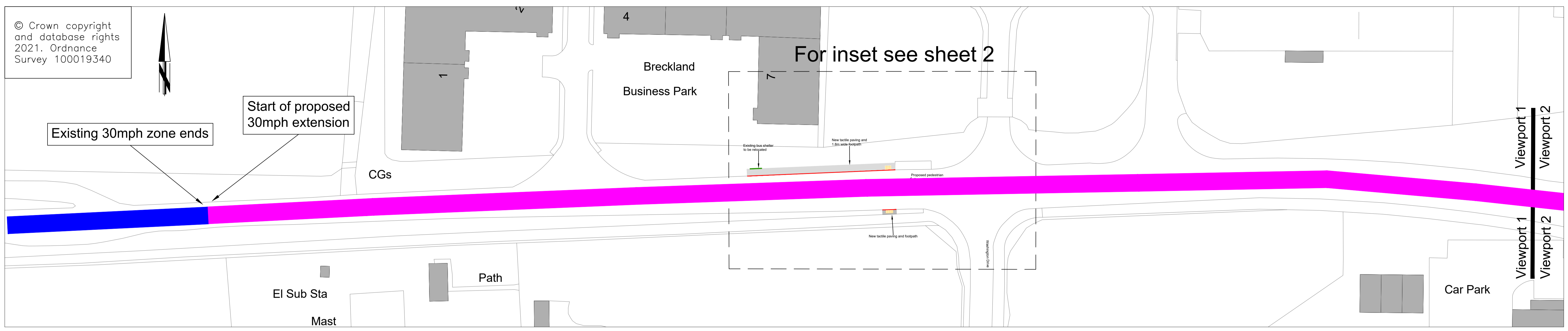
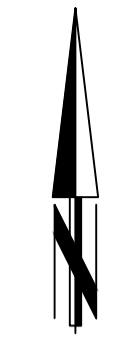


© Crown copyright and database rights 2021. Ordnance Survey 100019340



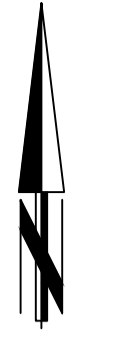
Tom McCabe
 Executive Director of
 Community and Environmental Services
 Norfolk County Council
 County Hall, Martineau Lane
 Norwich NR1 2SG

DRAWING TITLE
 PLA530 Norwich Road, Carbrooke
 Parish Partnership Scheme
 Consultation Plan (Sheet 1 of 2)

REV.	DESCRIPTION	DRAWN BY	CHECKED	DATE

SURVEYED BY	INITIALS	DATE	DRAWING No.
OS	OS	2021	PLA530-HP3-CP-001
DESIGNED BY	JC	01/21	PROJECT TITLE
DRAWN BY	JC	01/21	Norwich Rd, Carbrooke Parish Partnership Scheme
CHECKED BY	PR	01/21	SCALE 1:500 @ A1
			FILE No. PLA530

7



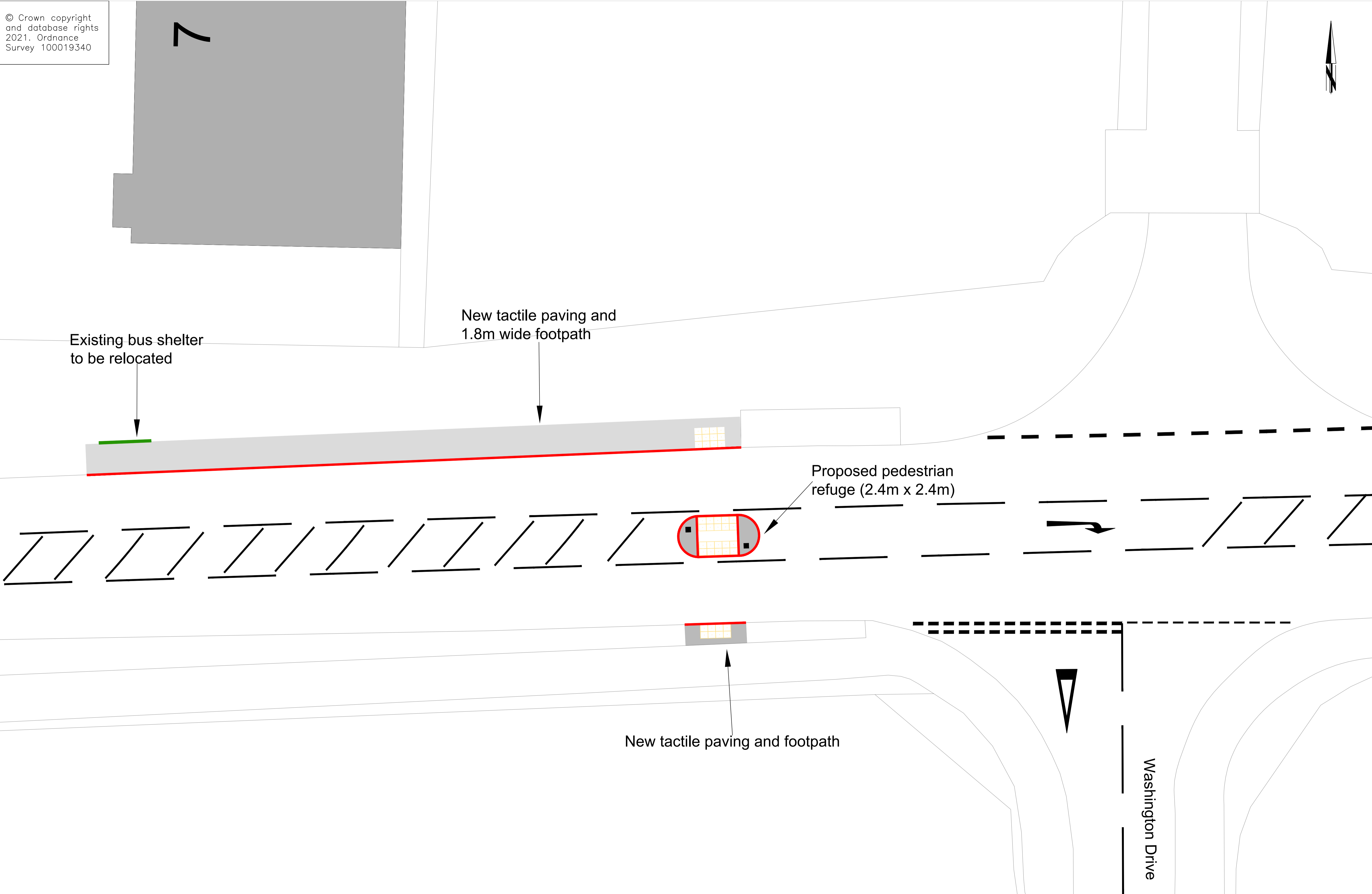
Existing bus shelter to be relocated

New tactile paving and 1.8m wide footpath

Proposed pedestrian refuge (2.4m x 2.4m)

New tactile paving and footpath

Washington Drive



REV.	DESCRIPTION	DRAWN BY	CHECKED	DATE

	INITIALS	DATE	DRAWING No.
SURVEYED BY	OS	2021	PLA530-HP3-CP-002
DESIGNED BY	JC	01/21	PROJECT TITLE
DRAWN BY	JC	01/21	Norwich Rd, Carbrooke
CHECKED BY	PR	01/21	Parish Partnership Scheme
			SCALE
			1:250@ A1
			FILE No.
			PLA530