

Norfolk County Council Putting People First – our plans to save money



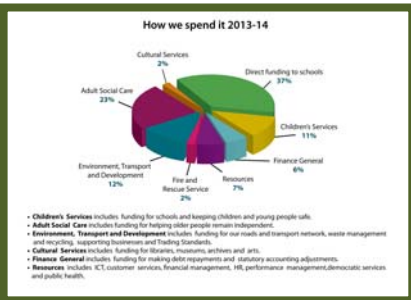
Norfolk Putting People First is about the Council's plans to save money. This version of the Norfolk Putting People First consultation document is for people with a learning disability.

What is going to happen with money?



Norfolk County Council gets money from the government. We use this money to pay for services for people in Norfolk.

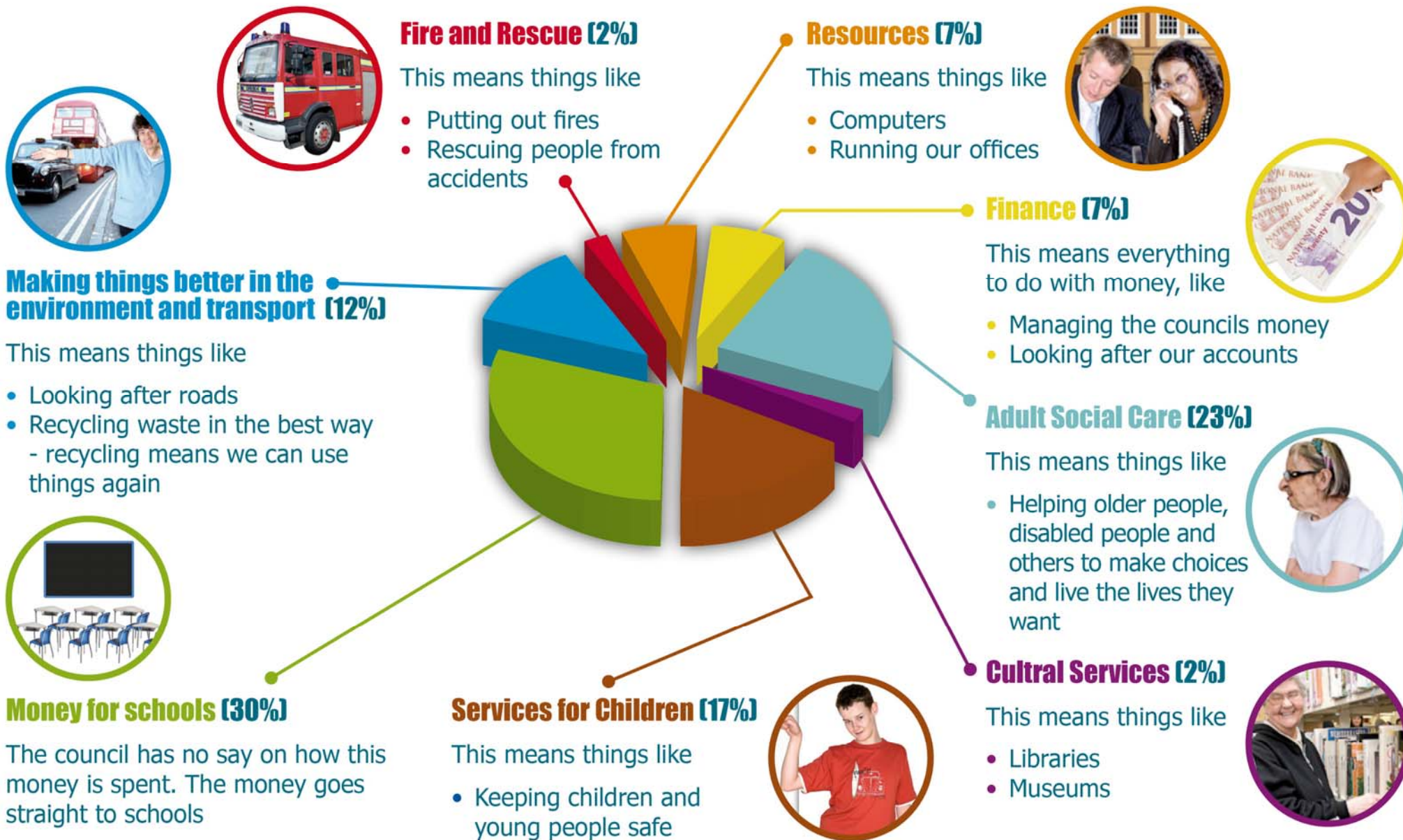
Each year, we divide up all the money we have and spend it on different services.



We have made a picture called a **pie chart**. You can see this on the next page. The **pie chart** tells you how we will spend money in 2013-2014.

How we spend it 2013-14

This picture is called a pie chart. The pie chart shows you how we will spend money this year. The bigger the piece of pie, the more money will be spent. You can see in the picture that after schools we spend the most money Adult Social Care. Ask your carer or support worker to help you with the pie chart. They will be able to explain what the pie chart is telling you.



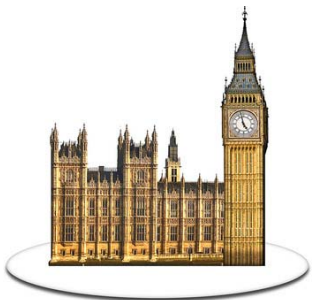


You can see from the chart that most money will be spent on schools – we cannot control how this money is spent.



The next biggest spend in money is on services for adults who need extra support. This is called **adult social care** and means things like helping older people, disabled people and people who need support to make choices and live the lives they want.

What is happening to the amount of money we have?



The amount of money we get from the government has gone down.



From 2014 to 2017, we think the money we get from the government will go down by **£91 million pounds**.

This is a lot of money. It means we do not have as much money to spend.



We know that the cost of the services we are giving you will go up. This means we will have to make some savings.



We will have to save **£189 million pounds** over the next 3 years.



We must find ways to save money.



We are going to have to be tough and make some hard decisions.

The Proposals

The proposals are our plans to save money on services that might change things for people with a learning disability and disabled people



Proposal number 30

Spend less money on residential care services by supporting more people to be able to stay in their own homes.



Proposal number 31

Save money by limiting how people can spend their personal budget





People with a **personal budget** will have to pay for their **wellbeing activities**. A **personal budget** is money you can get from the government to pay for support.

Or local groups might run **wellbeing activities** for people. These are things that keep you feeling well.

Proposal number **32**

We will give less money to the group that gives community health support to people with a learning disability

The group will have to show us plans for what they will do with less money.

We will ask people what they think about the new plans.



Proposal number 33

We will ask the groups that give care to people with a learning disability and people with a physical disability to save money by



- Not looking after as many people who need support and care all day and night, all the time



- Building homes quicker for older people and people with **dementia** – **dementia** is when you get confused and cannot remember things. Building homes like this will make things better for these people



Some people will see a change to the care they are getting at the moment.



Proposal number 34

We will spend less money on the Reablement and Swifts services

We will try to find other ways of paying for these services.

If we cannot do this, people that have left hospital will not get these services.



Proposal number 35

We will give housing services to vulnerable people that need them the most. This is the law.

For example, people who have come out of prison, are homeless or people with drug and alcohol problems.



Proposal number 36

We will change the way we work out who gets help with transport



Disabled people who get different payments like **personal budgets** to give them help and support, will get less money to help them with transport.

Proposal number 37

We will stop spending money on the Strong and Well programme





This was money that we had planned to give to local groups to use to support vulnerable people. We will not spend this money now.

You can read more about the cuts we might make in our main booklet. You need to go to this website: **www.norfolk.gov.uk/puttingpeoplefirst**

Or phone **0344 800 8020** and we will send you a booklet.



We want to know what you think of our plans to save money

We want to know if you have ideas for how we could do things differently.

Tell us what you think



We want to know what you think about our plans to spend less money.

You have until **Thursday 12th December 2013** to tell us what you think.

You can tell us what you think



- On our website
www.norfolk.gov.uk/puttingpeoplefirst



- You can send us an email
haveyoursay@norfolk.gov.uk



- You can write to us

Send your letter to this address – **you do not have to put a stamp on it**

Freepost Plus RTCL-XSTT-JZSK, Norfolk
County Council, County Hall, Martineau Lane,
NORWICH, NR1 2DH



Or help us save money and send your letter to
this address and **put a stamp on it**

Norfolk Putting People First, Norfolk County
Council, Room 501, County Hall, Martineau
Lane, NR1 2DH



If you have any questions you can get in touch with
us by:

Telephone **0344 800 8020**



Thank you to Raincharm for the words

www.raincharm.co.uk

Thank you to Photosymbols for the pictures

www.photosymbols.com