

# A brand new Recycling Centre for Greater Norwich

We're planning a new recycling centre for Greater Norwich.

Norfolk County Council provides 20 recycling centres for residents to recycle, reuse and dispose of their waste. We accept a wide range of household waste at our recycling centres for **FREE** with additional facilities for the disposal of DIY type construction and demolition waste and, at some sites, trade waste.

Reuse shops, located on some sites, are a great place to donate and buy items for bargain prices; from books and DVDs, to bikes and small furniture.



## Why are we moving?

The Mile Cross Recycling Centre on Swanton Road is operated by FCC Environment. The contract for the site ends in 2021 and, as the site is not owned by the County Council, we need to find a new site for a recycling centre.

We want a new site that makes reuse and recycling easy for residents and improves how much waste is reused or recycled in Norfolk. We also want to make sure that our recycling centres are ready for future housing growth.

Norfolk County Council is investing £2.75m in a replacement recycling centre for Greater Norwich.

## The Site Search

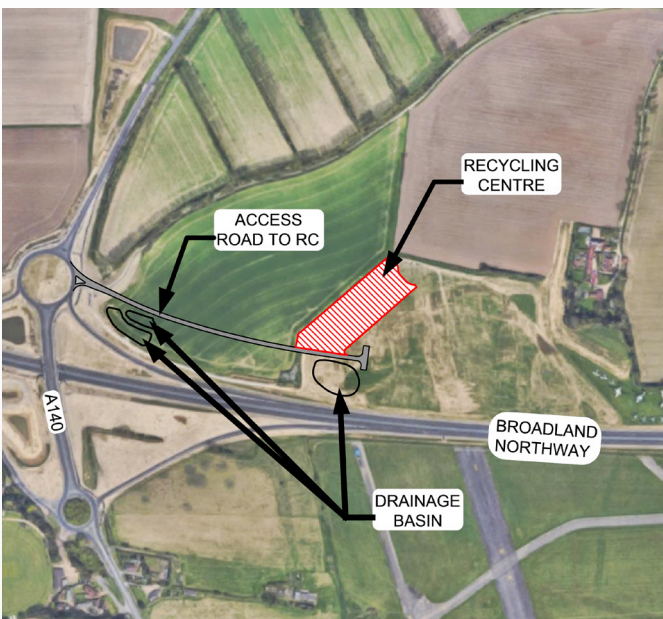
We started looking for a new site in 2015 and have looked at over 20 sites to see if they were suitable and available to be developed into a new recycling centre.

We looked for sites that:

- Were big enough for separate areas for the operating vehicles and the public, a good drainage system, site office, reuse shop and plenty of parking.
- Could take up to around 20,000 tonnes of waste a year to allow for current volumes of waste and for future housing growth.
- Provide suitable access for public and service vehicles.
- Provide good road links to ensure the new site is easily accessible but not immediately adjacent to residential property.
- Could be available for access seven days a week.

# The Proposed Site

The proposed site is located on land off the A140 Cromer Road and Broadland Northway junction, to the North of Norwich Airport.



## The New Site

Key features planned for the new site:

- The county's largest reuse shop.
- Plenty of parking spaces.
- No steps on site as the bins will be at a lower level.
- Pay as You Throw service for disposal of DIY waste.
- Trade service for small businesses.
- One-way system for smooth traffic flow and reduced queues.
- The site will not need to close for essential waste collection and other operations.



# Visualisation

We Asked, You Said, We Did



**Last summer, we asked you what you'd like to see in a new recycling centre.**

You told us that you'd like to see a new site with:

Plenty of parking

Easy vehicle flow through the site

Separate service area

Low level bins or raised platforms

We've incorporated these features into our plans and we want you to tell us what you think of the proposed site layout, so we can refine it before submitting a planning application.



# Planning and the Environment

We are preparing the technical reports required for a planning application, which will include the following:

## Traffic and Transport

The recycling centre will be accessed from a new access road off the A140/A1270 Broadland Northway northern roundabout. The access road and junction have been designed to support the new recycling centre along with the traffic associated with the proposed business park development situated adjacent to the site.

In May 2019 traffic surveys were carried out at key local junctions in the area and are being used to model the impact of the proposed recycling centre on the existing highway network.

## Opening Hours & Lighting

The current Mile Cross Recycling Centre is open from 9am to 7.30pm (1 April – 30 September) and 9am to 5pm (1 October – 31 March). At this stage, the planning application will include the same public opening hours as Mile Cross and allow staff access to the site for servicing from 7am.

The proposed development will include external lighting for safety and to allow the site to be open after daylight hours.

## Odour and Noise

Waste will be stored in containers and taken off-site for disposal or recycling when they are full. The site will be carefully managed to ensure that full containers are taken away quickly so the site can operate smoothly and to minimise the risk of odour.

As part of the planning application we will assess the noise that some of the onsite plant and machinery typically produce. The site is not next to residential property, and its location close to the Broadland Northway means that we do not expect there to be any noise impacts from the new site.

## Environmental Permit

We will apply to the Environment Agency for a permit to allow the site to operate. The permit will set out rules that our site operators will need to follow, including how much waste we can take and store on site, what we do with the waste and ensuring our site is safe, secure and does not harm the environment.

We expect our site operator to maintain very high standards of cleanliness when operating the site, including regular litter picking.

Once operating, the site will regularly be monitored by Norfolk County Council and the Environment Agency.

## Ecology and Landscape

An ecology survey has been carried out, including a data search for any records on or near the site and a site walkover. The site for the recycling centre is largely scrub with short vegetation and is not close to any areas designated for ecology.

As part of the design of the site, we will be proposing some planting around the edge of the recycling centre. A wider landscaping scheme for the business park will be put forward by the adjacent developer as part of their outline planning application.

## Flood Risk and Drainage

We are proposing an infiltration basin close to the entrance to the site, near the A140 roundabout and by the new recycling centre for the treatment and discharge of surface water.

The basin will take water from the new access road and some of the other proposed development nearby.

The drainage features need to be designed to take surface water runoff from the sites and to cope with storm events to prevent flooding on the site, in line with current guidance.

A flood risk assessment will be submitted as part of the planning application.



# The Programme

Here's the planned **timetable** for the development of the new site.

Our consultation is **open 4 Nov to 2 Dec 2019**  
Planning application submission in **winter 2019/20**  
Planning decision expected **spring 2020**  
Access road construction begins **summer 2020**  
Recycling centre construction in **2020/2021**  
Recycling centre opening **September 2021**



## The Construction Period

It will take around 4-5 months to build the access road and drainage features needed to support the development on the site. This is likely to start in summer 2020.

Once the road is in place, construction can start on the recycling centre to ensure it's ready to open in September 2021.

Construction works for the road and recycling centre are likely to be carried out during the following hours:

**Monday - Friday 07:00 - 19:00**  
**Saturday 07:00 - 13:00**  
**Sundays and Bank Holidays - No working**

The construction hours will help to ensure that impacts to the local road networks during peak hours would be minimised. The construction work will be strictly controlled, with measures in place to limit, as far as possible, any off-site disturbance. This will include measures to:

- Ensure that all vehicle loads leaving site are secure and wheels are clean;
- Ensure that noise levels are minimised as far as practicable; and
- Reduce off-site dust emissions, through use of best practice measures.

# Other Recycling Centre Improvement Works

As well as the proposed new site to replace the Mile Cross Recycling Centre, we've secured funding to make more improvements to Norfolk's recycling centres.

## These include:

- Relocating the Ketteringham site to a new recycling centre by using available spare space on part of the Harford Park and Ride in 2021. It is proposed that this new, bigger site will provide easy access for residents in South Norwich to a new facility. The Park and Ride will continue to operate.
- A new recycling centre for Wymondham by 2022. The current Wymondham Recycling Centre is very small with a single-track access road and due to proposed housing growth around Wymondham and Attleborough, we're proposing to build a bigger site that is more accessible.
- Improvements to the sites at Sheringham and Morningthorpe by 2022 to improve recycling and access onto these popular recycling centres.

This programme of work is being carried out over the next three years.

