



Help us with the design of the new community hub in King's Lynn

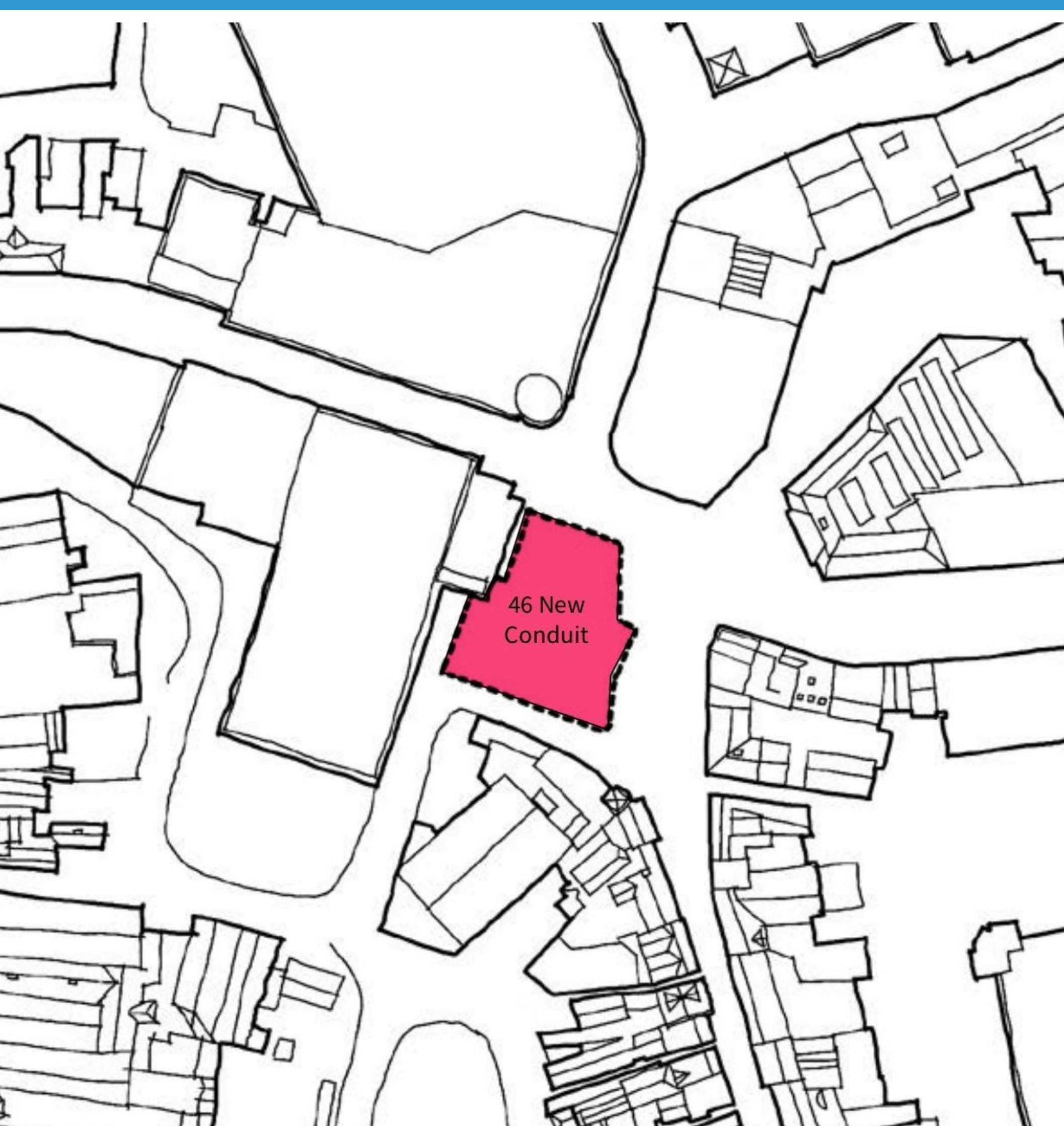


The story so far

As much as we love the Carnegie, our library service has now outgrown the space available. Whilst it's great that our services are in such demand and that we have a lot more we want to offer King's Lynn, we can't do this from the existing building so sadly it's time to move.

We're therefore on a mission to create a modern, accessible, library, learning, and community hub in the heart of King's Lynn town centre.

We now need your help to decide what the outside of the building will look like. We also need your input into the future use of the Carnegie building.



46 New Conduit Street

We looked at four buildings when searching for a home for the hub. The old Argos building in New Conduit Street provides the space, flexibility and location needed to meet the aims of the project.

This space also gives us the opportunity to transform an unused building into something modern and attractive, create a town centre space for all to enjoy and increase the number of visitors to the town which will have an economic impact.

A building with a strong local identity and green credentials

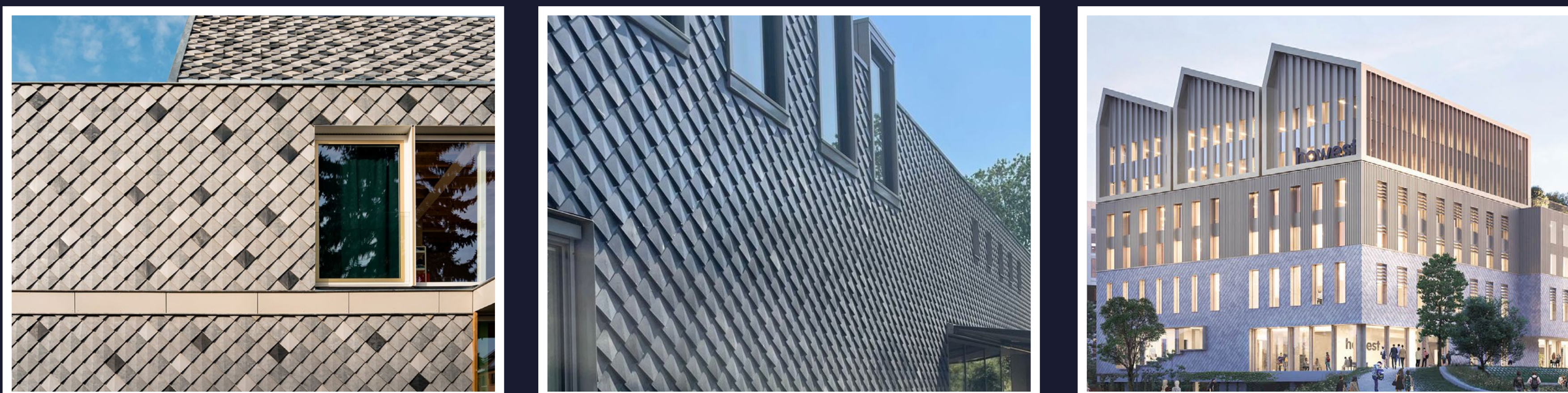
One thing that makes a huge difference to the look and feel of a building is the material it is made from. Our architects have been considering the types of materials that we could use on the outside of our building and are taking their inspiration from existing buildings in King's Lynn.

We are looking at using two main materials - one for the ground level of the building and a different one for the upper levels.

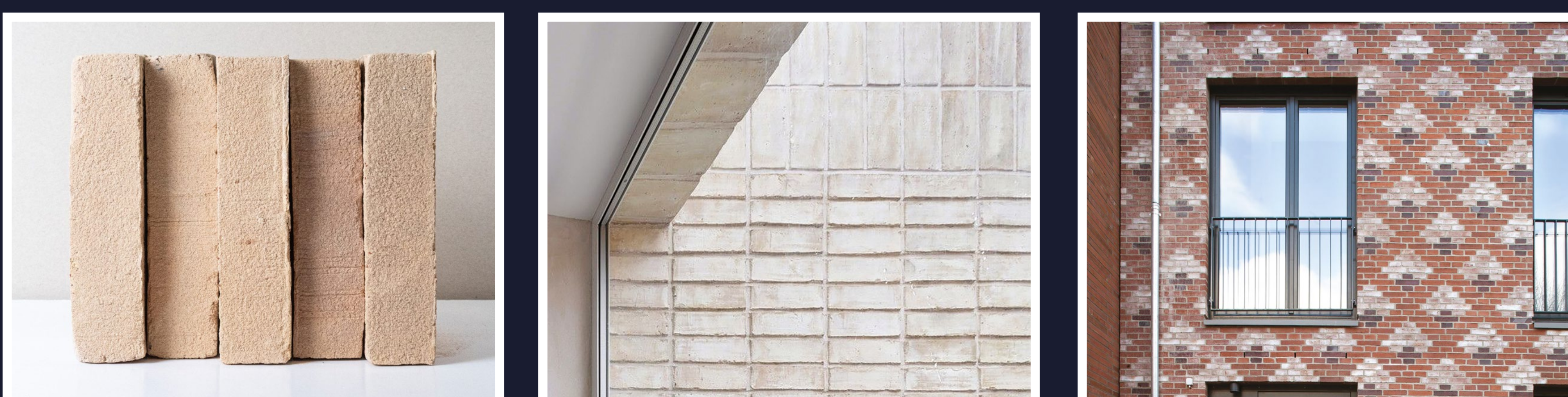
Solid Stonework



Tiles



Bricks



Ground level – solid stonework

We are considering using stone for the base of the new hub as it gives gravitas, shows that a building is significant and provides a connection to other historic buildings in King's Lynn.

Upper levels - tiles

As well as being sustainable, the colours of the tiles could create patterns like those seen across other buildings in King's Lynn. The tiles are low carbon and can be fixed using a simple timber batten system. As well as making the building green, they would make it easy to build.

Upper levels - bricks

We are looking at using bricks made from recycled construction waste. These products have less carbon than conventional bricks and we could use a careful selection of colours and patterns inspired by a material typical of King's Lynn.

**Which materials do you think are best for a new public building?
Which do you think captures the spirit and identity of King's Lynn?**

A place everyone can feel proud of



Our architects have been exploring different designs and the shape of the building is evolving over time. Whatever the final shape, we will:

- reuse as much of the existing structure as possible, reducing cost and saving carbon
- make the public space around the building simpler and more enjoyable to use
- open up views of the old Majestic cinema so it can be seen and enjoyed

What kind of building do you want to see? Unique or understated? Standing out or blending in? Quietly green or showing off and shouting about its sustainability?

What about the Carnegie building?

At the same time as getting excited about the new community space and library, we are equally focused on finding a new role that befits the Carnegie building and benefits the community.

We are committed to keeping it as a community asset – this means that there are no plans for the building to be turned into flats.

We now need your help to make sure that our decision on the future use of the building is based on what's important to you.



Help us with the design by feeding back your views at www.norfolk.gov.uk/newcommunityhubs by 24 November 2023



Remember, the new hub will be subject to the full planning process locally to make sure that it is in keeping with, and complimentary to, the wider town centre. This means that there will be an opportunity to comment on the final plans.