



# Norfolk County Council

## Your views on our proposal to increase Council Tax in 2023-2024

**Council Tax**

Your Name  
88 Your Street  
Your Town  
AN35 8TT

**Council Tax Bill 2019-2020**

This property is listed in Band B

Council Tax for 1/4/2019 - 31/3/2020 %change from  
Your City Council £980.22 2.0%  
Adult Social Care £45.65 3.0%  
Police £32.70 3.6%  
Fire Service £48.22 2.0%

**Total Council Tax £1,206.79**

Less reduction for Disabilities -£301.70  
Less single person discount -£301.70  
Less Council Tax support - £297.80  
Less overpayments - £0.00

**Total Council Tax £305.59**

Date  
26 February 2019

Your Account Number  
02 30 56 22

Please see the back of this bill for how to contact us.

Please tell us if there is a change which will affect your bill, for example if you move house or if we need to stop a discount. You will need to tell us within 21 days or you could be fined.

We have granted sole occupier 25% discount because we believe only one adult over 18 lives here.

We have granted a reduction for Disabilities of 25%.

Thank you for paying by Direct Debit. We will collect your Council Tax in 10 instalments as follows: £36.20 on or just after 30/04/2019 then £27 on or just after the last day of each month for 9 months starting 31/05/2019.

The council tax attributable to your city council includes a precept to fund adult social care, and the city council % increase is below the referendum threshold. Please see the back of the bill for further information or visit [www.citycouncil.gov.uk/counciltax](http://www.citycouncil.gov.uk/counciltax)

**Helpline**  
0800 222 33 44

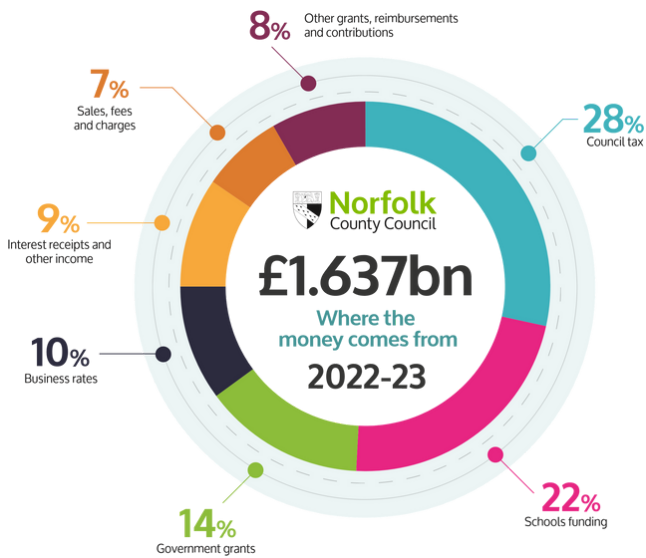


**Some of the things in this paper  
are not easy to understand.**

**You may need help from  
someone to read it.**

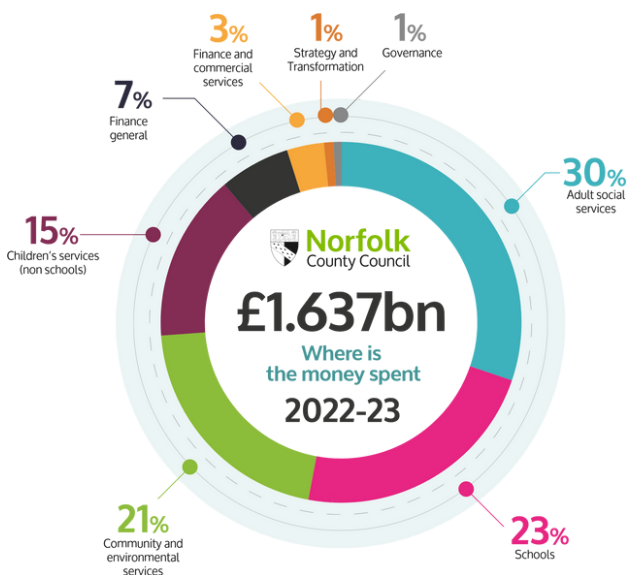


Norfolk County Council will set a new budget on 21st February 2023. We are asking for your views on our plans to increase the amount people pay for Council Tax.



## Where the money comes from

A large amount of our funding comes from Council Tax and we use this money to deliver vital services across the whole county.



## This is where Council Tax is spent

This pictures how we spend Council Tax.



Council Tax helps pay for local services and applies to all homes. Council Tax is paid by the occupier.



If the Council wishes to increase Council Tax by more than the limit set by Government, which is 1.99%, we would have to hold a local vote.



To help us deal with our cost pressures and invest in vital services, we are considering increasing Council Tax by 1.99% in 2023-24.

However, this is not confirmed until the Council's budget meeting in February and we are therefore asking your views on different levels of Council Tax increase.



We are responsible for social care and are considering increasing our Adult Social Care precept by 1%.

The Adult Social Care precept is the amount councils can ask for as well as Council Tax.

Adult social care is a collection of wide-ranging activities aimed at helping people who may be older or living with disability or physical or mental illness.

This can include services offering people personal care in their own homes or in care homes.



The Council spends £1 million a day on this.



We would like to hear your views on our proposals.

**Questions**



1. What do you think about it?

Good

Bad

Not sure



You do not have to answer all of the questions, only the ones you want to.



Please send us your response by **Friday 16th December.**

We will take a report about the findings of this consultation to the Council Cabinet in January 2023. We will set a new budget on 21st February.



2.99%

## The effect our proposals around different increases in Council Tax would have

An increase of **2.99%** would mean in 2023-24 Norfolk County Council's Council Tax charge for a typical Band D home would see an indicative increase of approximately £0.87 per week or £45 for the year and the charge for a Band D home would be around £1,562.



4.10%

The average Council Tax increase since 2016-17 for Norfolk County Council has been **4.10%**. An increase at this level would mean in 2023-24 Norfolk County Council's Council Tax charge for a typical Band D home would see an increase of roughly £1.19 per week or £62 for the year and the charge for a Band D home would be around £1,579.



in line with  
inflation

The cost of the services that the Council provides are impacted by the level of costs rising, known as inflation.

These costs have currently risen by **9.9%**.

If we increased Council Tax at this level, it would mean in 2023-24 Norfolk County Council's Council Tax charge for a typical Band D home would see an increase of approximately £2.88 per week or £150 for the year and the charge for a Band D home would be around £1,667.

It is likely that this would require a local vote to be held.

**Question 1. How far would you agree or disagree with increasing Norfolk County Council's share of Council Tax, including the Adult Social Care precept) by 2.99% in 2023-24?**

Please tick one box

Strongly agree

Agree

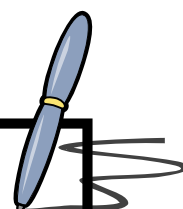
Neither agree or disagree

Disagree

Strongly disagree

Don't know

Why do you say that? Please tell us more about why you chose that answer below.





**Question 2. How far would you agree or disagree with increasing Norfolk County Council's share of Council Tax, including the Adult Social Care precept, by 4.10% in 2023-24?**

Please tick one box

Strongly agree

Agree

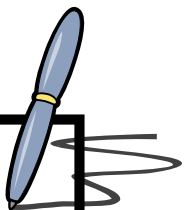
Neither agree or disagree

Disagree

Strongly disagree

Don't know

Why do you say that? Please tell us more about why you chose that answer below.



**Question 3. How far would you agree or disagree with increasing Norfolk County Council's share of Council Tax, including the Adult Social Care precept, by 9.9% in line with inflation in 2023-24?**

Please tick one box

Strongly agree

Agree

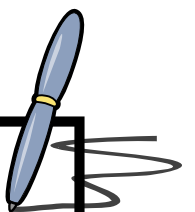
Neither agree or disagree

Disagree

Strongly disagree

Don't know

Why do you say that? Please tell us more about why you chose that answer below.





The Council must save £60 million in 2023-2024.

We are proposing to make savings in lots of ways.



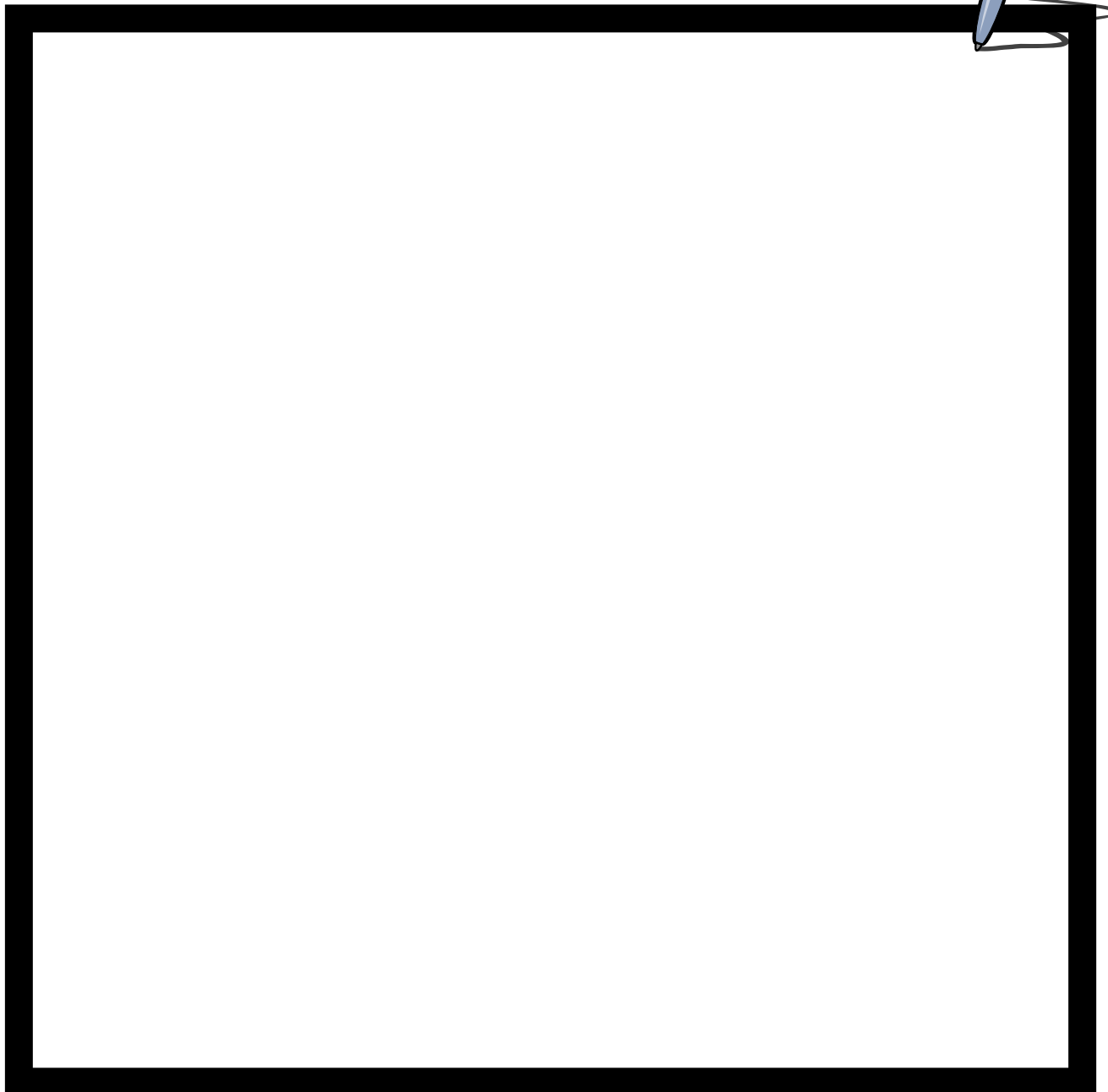
Our aim is to protect services for the most vulnerable while ensuring that we become more financially resilient and sustainable for the future.



We are looking at the way the Council works, to save money.

**Question 4. Do you have any comments about our budget challenge and savings?**

If yes, please write your answer in the box below:



A large empty rectangular box with a thick black border, intended for writing an answer. A blue pen is positioned at the top right corner of the box.



Please send your survey back to the address below. You do not have to put a stamp on the envelope.

**Freepost Plus RTCL-XSTT-JZSK,  
Norfolk County Council,  
Ground floor – south wing,  
County Hall, Martineau Lane,  
Norwich, NR1 2DH.**



You can also tell us what you think via our website:

**[www.norfolk.gov.uk/budget](http://www.norfolk.gov.uk/budget)**



Or you can send an email to  
**[haveyoursay@norfolk.gov.uk](mailto:haveyoursay@norfolk.gov.uk)**