



How will changing our charging policy affect people?



We asked people about our idea to change our charging policy.

This is the rules we use to work out how much people have to pay for adult social care and support services.



Our idea is to follow what the Government says about how much people can pay for their non-residential care.



Non-residential care is things like

- help at home,
- getting meals,
- support with activities such as going on trips,
- help with education,
- and going to a day centre.



If our idea went ahead some disabled people would have to pay more for this care.



We asked people how our idea might affect them.



This is a report about what we found out.



The report is to help our county councillors to understand how it will affect people.



Our county councillors have to listen to what the report says before they make a decision about our idea.



What we found out



If our idea went ahead it could make life worse for some disabled people.



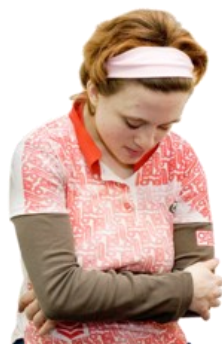
If all the changes in our idea went ahead at the same time it could have an even worse effect.



Some people might have less money to live on and might become poorer.



Some people might have less money to do the things they want to do.



Some people might end up less independent than before.



Our idea might make things worse for people living in the countryside. Lots of things make it more expensive to live in the countryside, like getting about and using transport.



But, we would only ask people to pay what the Government said they could afford.—

Everyone would still get the amount of money the Government says they need to live on. This is called the Minimum Income Guarantee



The money we save would help us to support very disabled people who need a lot of help.



Other things we have to think about



Disabled people face lots of issues when trying to be independent.



There have been lots of changes to welfare benefits.



Some people might get stressed.



Some people might get ill if they get stressed.



People might get fewer services – because they have less money to spend or can't pay for transport to get there.



People might become lonely as they would have less money to spend on meeting friends or going out.



Carers might have to give extra help.



It can be expensive to travel to services.



More services are online.
It can be expensive to buy computers and broadband.



Some people can't manage money by themselves. Some people need help with this for all different reasons.



Some people have ups and downs in their mental health and may need extra support to cope.

Our report says



Other councils have already changed what they do.



If our idea went ahead, everyone would still get the money the government says they need to live on.



Our idea would affect some disabled people.



We have asked our committee to think about this before making their decision.

Things to help disabled people



Here are the actions we said the council should take.



Make changes in steps rather than in one go.



Make sure people with learning disabilities and others get the support they need to manage their money.



Help people who say that they are struggling with their money.



Write to everyone affected to give them advice.



Make sure the information is easy for people with learning disabilities to understand.



Tell people where they can go for help and advice on their money.



Work with advocacy organisations to make sure that advice is easy for people with learning disabilities and people with mental health problems to understand.