

## **Consultation on a proposal to establish a 16 place Social Emotional and Mental Health base at Toftwood Infant School and Toftwood Junior School, Dereham from 1<sup>st</sup> September 2025.**

### **Our proposal**

Norfolk County Council would like to hear your views on our proposal for Toftwood Infant School and Toftwood Junior School, Dereham, to establish a 16 place Social Emotional and Mental Health Base, from 1 September 2025. There will be 8 places for Key Stage 1 children and 8 places for Key Stage 2 children.

We appreciate that children and young people with social, emotional and mental health needs can struggle to engage with learning and cope in a classroom without additional strategies and interventions. A Base can support children to overcome their barriers to learning, to be better able to cope and to be re-integrated into a mainstream setting, in which they can achieve their potential.

The Base will be managed by the Headteacher and governing body of Toftwood Infant and Junior School Federation.

This has been identified in Norfolk's Local First Inclusion Programme as a priority for development. The places will be allocated through Norfolk County Admissions processes will grow up to full capacity through this admissions process.

### **What are the benefits of this proposal**

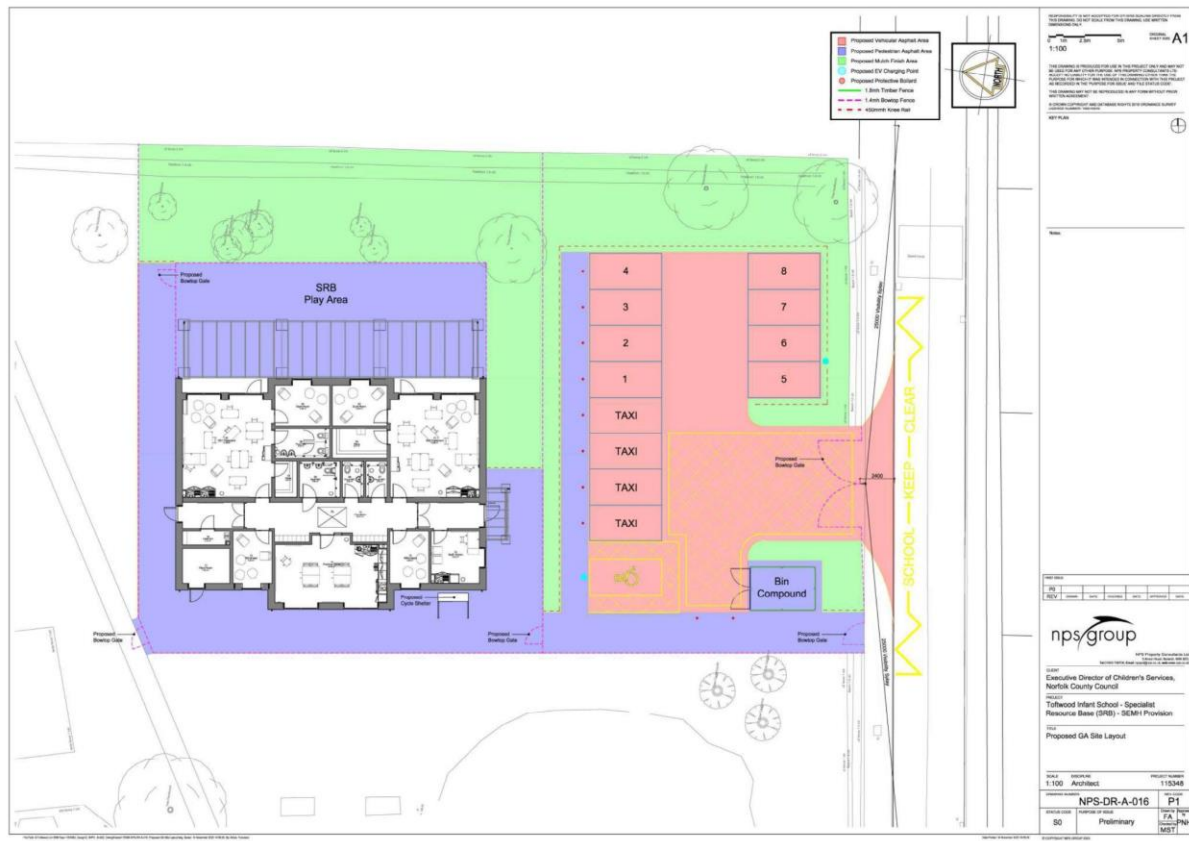
The main driver for Norfolk County Council and the governors at Toftwood Infant and Junior School Federation, is to meet the increased demand for specialist educational provision within our area, to best meet the needs of our most vulnerable learners. We feel our proposal would benefit children and young people because it will:

- support more pupils with special education needs and disabilities to be educated and thrive in their local school and community;
- enhance pupils progress by effectively meeting their individual social, emotional and mental health needs;
- help facilitate better access to the curriculum and support pupils to achieve their potential;
- ensure that needs can be met locally avoiding the need for pupils to spend unnecessary time travelling to an appropriate school further away. This is better for young people and saves the taxpayer money in transport costs;
- increase the availability of places to meet the needs of pupils with SEND;
- address identified geographical, and age and phase gaps in Base provision as identified in Norfolk's SEND Strategy;
- support the sharing of expertise and good practice as part our school.

### **Information about the proposed base**

This will be a new purpose-built building with two classrooms, breakout and flexible spaces for teaching, along with administration space, toilet and practical teaching spaces.

8 January 2024



It will be located between Toftwood Infant School and Toftwood Junior school, on the Infant top field, with its own car parking and drop off area. There will be an opportunity to have your say on the building during the planning application stage, which is due to take place early September 2024.

### Capital costs

All capital costs for the new purpose-built building will be funded from Norfolk County Council's Local First Inclusion Programme, to ensure there is an enabling Environment.

### How can you have your say

We will be holding a drop-in event where you can come and find out more about this proposal and look at the proposed plans for the capital project:

- Wednesday 17 January 2024, 9 – 10am at Toftwood Junior School

If you are unable to attend this event, but would like to comment on our proposal please:

- complete the attached form and hand it to the school office
- or email [schoolreview@norfolk.gov.uk](mailto:schoolreview@norfolk.gov.uk)
- or access our online survey: <https://norfolk.citizenspace.com/childrens-services/toftwoodbase>

**We need all responses by 12 noon, 16 February 2024.**

### What happens next

As the local decision maker for school organisation, the Director for Children's Services will review all the comments made during this consultation and decide whether to proceed to the statutory public notice stage for this proposal.

8 January 2024



## Consultation on proposed changes to Toftwood Infant School and Toftwood Junior School, Dereham

Let us know what you think of our proposal

Please let us know which school your child attends, if appropriate.

Please tick a box

Infants     Junior     Both     Neither

How far do you agree or disagree with our proposal to establish a 16 place Social Emotional and Mental Health Base, from 1 September 2025?

Please tick a box.

Strongly agree     Agree     Neither agree or disagree

Disagree     Strongly disagree

Why do you say this? Please write in the box below.

Are there any other comments or suggestions you would like to make to help us with this decision and in planning for the future provision of the children? Please write in the box below.

8 January 2024

We would like to hear from many different people as your views help us to decide whether or not we make these changes. We will also use any personal information to understand how different groups of people feel about our proposal to increase the number of places the Specialist Resource Base at Toftwood Infant and Junior School Federation.

We will process any personal information we receive from you in line with the General Data Protection Regulation (GDPR) (Regulation (EU) 2016/679), the Data Protection Act 2018 and Norfolk County Council's data protection policy and guidelines. This means that Norfolk County Council will hold your personal data and only use it for the purpose for which it was collected, being this consultation.

We won't identify individuals when reporting back our findings and under our record management policy we will keep this information for five years. We will also, under normal circumstances, not pass your personal data on to anyone else. However, we may be asked under access to information laws to publish or disclose some, or all, of the information you provide in response to this consultation, including any personal information. We will only do this where such disclosure will comply with such relevant information laws which include the Freedom of Information Act 2000, the Data Protection Act 2018 and the Environmental Information Regulations 2004.

Please tell us who you are, (tick all that apply):

- |   |  |
|---|--|
| <input type="checkbox"/> Pupil                                    | <input type="checkbox"/> School governor       |
| <input type="checkbox"/> Parent / Guardian                        | <input type="checkbox"/> Local resident        |
| <input type="checkbox"/> Member of the Parent Teacher Association | <input type="checkbox"/> Local business        |
| <input type="checkbox"/> Member of staff                          | <input type="checkbox"/> Local sports group    |
|   | <input type="checkbox"/> Local community group |

Other (please specify): \_\_\_\_\_

At which school? \_\_\_\_\_

What is your postcode? \_\_\_\_\_

Your views will help us decide if this proposal goes ahead. You can tell us your views by returning this completed form to:

- Your school office
- Emailing [schoolreview@norfolk.gov.uk](mailto:schoolreview@norfolk.gov.uk)
- Accessing our online survey: <https://norfolk.citizenspace.com/childrens-services/toftwoodbase>

**This consultation ends at 12 noon, 16 February 2024**