

March 2024



## **Report to the Executive Director of Children's Services for decision on a statutory change to Toftwood Infant School, School Lane, Dereham, Norfolk, NR19 1LS and Toftwood Community Junior School, 38 Westfield Road, Dereham, NR19 1JB, from 1 September 2025**

### **What is the proposal?**

The proposal is to establish a 16 place Social, Emotional and Mental Health Base at Toftwood Infant School, School Lane, Dereham, Norfolk, NR19 1LS and Toftwood Community Junior School, 38 Westfield Road, Dereham, NR19 1JB, from 1 September 2025

### **Public notice and representation period**

A statutory public notice was issued by Norfolk County Council and published in the Eastern Daily Press on 26 February 2024. Copies were displayed at all the main entrances to Toftwood Infant and Junior Schools. The four week representation period came to an end on 22 March 2024. See Appendix 1 for Public Notice and Prescribed Information.

No representations were received during the Public Notice period.

All statutory requirements in relation to the statutory consultation were complied with.

### **The decision**

In coming to a decision, the Decision Maker is obliged to consider the following factors:

#### Education standards and diversity of provision

Norfolk County Council's policy is to expand schools that are rated 'Good' or 'Outstanding' by Ofsted. Toftwood Infant School was inspected in December 2023 and rated Good. Toftwood Junior School was inspected in January 2020 and rated Good.

This proposal is part of Norfolk County Council's Local First Inclusion which is the county council's six-year special educational needs and/or disabilities (SEND) improvement programme. We are committed to reviewing and developing Special Education Needs & Disability (SEND) provision as part of Norfolk's Local Offer of support to children, young people and families.

Pupils at the Base not only benefit from smaller classes with favourable pupil-staff ratios, but also benefit from being in a mainstream school and being included in many learning opportunities with their peers, with additional support from specialist

staff. In addition, the Base would have access to further resources and expertise from a Specialist Partner and wider professionals.

Norfolk County Council does not have enough local specialist special educational needs and disability (SEND) provision in mainstream schools. Our research has identified the SEND need and the location areas. Bases in mainstream schools enable all children and young people with SEND to get a consistently high-quality education with the right support for their needs in their local area first.

This proposal builds on the 32 specialist resource bases attached to mainstream schools across Norfolk, many established during the Phase 1 SRB programme/ expansion started in 2019, with some still in development. They provide a total of 436 specialist places, across five different SRB specialisms;

- Learning and Cognition (LCN)
- Speech, language and communication (SLCN)
- Social, emotional and mental health (SEMH)
- Autistic Spectrum Condition (ASC)
- Deaf (hearing impaired).

We have identified further priority areas for new or expanded SRBs, as part of Phase 2, including Social, Emotional and Mental Health bases in the Dereham area which can be provided by Toftwood Infant School and Toftwood Community Junior School, Dereham.

This proposal ensures that needs can be met locally, avoiding the need for children and young people to spend unnecessary time travelling to an appropriate school further away.

Equal opportunities issues

This proposal supports the presumption of mainstream education for children with special education needs under the Children and Families Act 2014. It also provides further choice for families of children with special educational needs whose preference is for their child to be supported in a mainstream school.

An Equality Impact Assessment has been undertaken on the proposals to establish SRBs in Norfolk Schools. This identified the following actions;

	<b>Action</b>	<b>Lead</b>	<b>Date</b>
1.	Consultation on SRB accommodation designs with SRB project group, specialist providers, educational psychologists, current and proposed SRBs to maximise opportunities for the building to be accessible and appropriate for the groups of children with SEND they cater for	NCC Capital Team	<b>Completed</b>
2.	Tender specifications to include Equality Act 2010 compliance and ensure due regard to BB104 guidance to ensure accessibility and SEND specific considerations are catered for in building projects	NCC Capital Team	May 2023 – February 2024

	<b>Action</b>	<b>Lead</b>	<b>Date</b>
3.	Schools to update their SEND information reports to include the SRB as part of the school's local offer	SENCO	From opening
4.	SRB schools to review their own equality and accessibility action plans	School	From opening
5.	SRB schools to make reasonable adjustments for any SRB pupils with a disability so they can play an equal part in whole school life	School	From opening

Actions 3 – 5 will be incorporated in the planning meetings with schools, in preparation for the base opening in their school.

#### Community cohesion

The County Council has considered that there are no specific community cohesion issues that arise from the school organisation change being proposed. The provision will promote inclusion of pupils with SEND in mainstream settings.

#### Travel and accessibility

It is expected there will be a positive impact on travel and accessibility as this proposal seeks to implement additional SRB places in Norfolk, therefore minimising the need to travel further to access this provision. It is not anticipated that there will be a significant increased impact on peak time traffic at the school, as the pupil numbers in the base are low and some pupils may arrive onto the school site by taxi.

#### Funding

All capital costs for the new purpose built accommodation will be funded from Norfolk County Council's Local First Inclusion SEND Improvement Programme, to ensure there is the appropriate accommodation. Long term value for money will be achieved as there is greater capacity to meet the needs of children with SEND locally.

### **Conclusions and recommendation**

In considering the proposals, the Decision Maker can decide to:

- Reject the proposal
- Approval the proposal
- Approve the proposal with a modification
- Approve the proposal subject to it meeting a specific condition.

There were no representations made during the statutory public notice period and the proposal was supported during the informal consultation stage.

This proposal supports the delivery of part of Norfolk County Council's Local First Inclusion programme which is the county council's six-year special educational needs and/or disabilities (SEND) improvement programme.

It is therefore **recommended** that the Executive Director of Children's Services, in her role as Decision Maker as delegated by Norfolk County Council, should decide in favour of the proposal to establish a 16 place Social, Emotional and Mental Health

Base at Toftwood Infant School, School Lane, Dereham, Norfolk, NR19 1LS and Toftwood Community Junior School, 38 Westfield Road, Dereham, NR19 1JB, from 1 September 2025.

## **Proposed significant change to Toftwood Infant and Toftwood Junior Schools, Dereham**

NOTICE IS HEREBY GIVEN, that, Norfolk County Council intends to make a prescribed alteration to the following school, in accordance with section 19 (1) of the Education and Inspections Act 2006 and The School Organisation (Prescribed Alterations to Maintained Schools) (England) Regulations 2013, by establishing a 16 place Social Emotional and Mental Health Base at Toftwood Infant School and Toftwood Junior School, Dereham, from 1 September 2025.

This Notice is an extract from the complete proposal. Copies of the complete proposal can be obtained <https://norfolk.citizenspace.com/childrens-services/toftwoodbase>; emailing [schoolreview@norfolk.gov.uk](mailto:schoolreview@norfolk.gov.uk) or by writing to the School Organisation Team, Children's Services, Lower Ground Floor, County Hall, Martineau Lane, Norwich, NR1 2DL.

**Within four weeks** from the date of publication of this proposal, any person may object to, or make comments on, the proposal by sending them to the School Organisation Team, Children's Services, Lower Ground Floor, County Hall, Martineau Lane, Norwich, NR1 2DL or by email to: [schoolreview@norfolk.gov.uk](mailto:schoolreview@norfolk.gov.uk)

Signed: Sara Tough

Executive Director of Children's Services

Publication Date: 26 February 2024

## **Statutory Proposal to establish a Social Emotional and Mental Health Base (SRB), for 16 places, at Toftwood Infant School and Toftwood Junior School, Dereham, from 1<sup>st</sup> September 2025**

### **1. Local Authority details**

Norfolk County Council, County Hall, Martineau Lane, Norwich NR1 2DH

### **2. School details**

<b>Name</b>	Toftwood Infant School
<b>Type</b>	Foundation School
<b>Address</b>	School Lane, Dereham, Norfolk, NR19 1LS
<b>Age Range</b>	4 - 7 years
<b>Capacity</b>	270 pupils; Numbers on roll 1 January 2024 = 217
<b>Ofsted</b>	Last Ofsted; December 2023 Rating; Good

<b>Name</b>	Toftwood Community Junior School
<b>Type</b>	Community School
<b>Address</b>	38 Westfield Road, Dereham, NR19 1JB
<b>Age Range</b>	7 - 11 years
<b>Capacity</b>	360 pupils; Numbers on roll 1 January 2024 = 342
<b>Ofsted</b>	Last Ofsted; January 2020 Rating; Good

### **3. What changes are proposed?**

It is proposed to establish a 16 place Social, Emotional and Mental Health Base for Toftwood Infant School and Toftwood Junior School, from 1 September 2025.

We appreciate that children and young people with social, emotional and mental health needs can struggle to engage with learning and cope in a classroom without additional strategies and interventions. A Base can support children to overcome barriers to learning, to learn strategies to enable them to successfully participate in a mainstream school setting, in which they can flourish.

This proposal is part of Norfolk County Council's Local First Inclusion Programme as a priority for development.

The places will be allocated through Norfolk County Admissions processes and the base will grow up to full capacity from 1 September 2025.

### **4. What is a social emotional and mental health base**

This base is a bespoke accommodation base, providing an enabling environment for learners, in a mainstream school, where children are taught by specialist staff. Social, Emotional and Mental Health bases form part of the Base programme in Norfolk and are a key component of Norfolk's SEND Local Offer, and of mainstream inclusion support to children, families and the school system.

Social, Emotional and Mental Health Bases provide a learning area which is calm and adapted to meet the needs of children and young people. It will be a primary phase base, offering up to 16 places; 8 places for Key Stage 1 and 8 places for Key Stage 2 children.

A panel of professionals would continue to admit pupils to the Base, not only from the local area, but also across a wider area. Pupils at the Base not only benefit from smaller classes with favourable pupil-staff ratios, but also benefit from being in a mainstream school and being included in many learning opportunities with their peers, with additional support from specialist staff. In addition, the Base would have access to further resources and expertise from a Specialist Partner and wider professionals.

The Base will be managed by the Headteacher and Governors of the Toftwood Infant and Junior School Federation.

## **5. Consultation details**

Norfolk County Council consulted on the proposal to establish a 16 place Social, Emotional and Mental Health Base for Toftwood Infant School and Toftwood Junior School, from 1 September 2025. The consultation document is available in Appendix 1.

The consultation was delivered, as set out by the DfE statutory guidance 'Making significant changes (prescribed alterations) to maintained schools', January 2023, and ran from 8 January to 16 February 2024. A total of 829 consultation documents were sent to governors, staff and parents at Toftwood Infant and Toftwood Junior Schools and key stakeholders. The consultation document was available on the county council website.

A consultation event was held on 17 January 2024, in person, supported by the Headteacher, Deputy Headteacher, SENCO, and School Organisation Manager, Norfolk County Council. No-one attended.

There were 12 responses and 92% of the responses strongly agreed with these proposals. The consultation report is available at Appendix A.

## **6. Why do we want to do this? (evidence of demand)**

Norfolk County Council has a statutory duty to;

- ensure a sufficient supply of school places in its area for children of school age
- promote high educational standards, diversity and parental choice
- ensure fair access to educational opportunity
- help fulfil every child's educational potential.

Norfolk County Council does not have enough local specialist special educational needs and disability (SEND) provision in mainstream schools. Our research has identified the SEND need and the location areas. These Bases located in mainstream

schools enable all children and young people with SEND to get a consistently high-quality education with the right support for their needs in their local area first.

This proposal builds on the 31 specialist resource bases attached to mainstream schools across Norfolk, many established during the Phase 1 SRB programme/ expansion started in 2019, with some still in development. They provide a total of 411 specialist places, across five different Base specialisms;

- Learning and Cognition (LCN)
- Speech, language and communication (SLCN)
- Social, emotional and mental health (SEMH)
- Autistic Spectrum Condition (ASC)
- Deaf (hearing impaired)

We have identified further priority areas for new or expanded Bases, as part of Phase 2, including Social, Emotional and Mental Health bases in the Dereham area which can be provided by Toftwood Infant and Junior School Schools.

Norfolk County Council and the Governors of the Toftwood Infant and Junior School Federation feel these changes would benefit children and young people because it;

- supports more students with special education needs and disabilities to be educated and thrive in their local school and community;
- enhances students' progress by effectively meeting their individual complex needs;
- helps facilitate better access to the curriculum and supports students to achieve their potential;
- ensures that needs can be met locally avoiding the need for students to spend unnecessary time travelling to an appropriate school further away. This is better for young people and saves the taxpayer money in transport costs;
- increases the availability of places to meet the needs of students with SEND;
- addresses identified geographical, and age and phase gaps in Base provision as identified in Norfolk's SEND Strategy;
- supports the sharing of complex need expertise and good practice as part of our school.

## **7. Objectives, including how the proposal would increase educational standards and parental choice.**

Norfolk County Council wants to:

- Enable 16 pupils to benefit from the specialist education and support provided by Toftwood Infant and Junior Schools Social, Emotional and Mental Health Base
- Increase the number of places for pupils in the Dereham area with social, emotional and mental health needs, as part of the Local Authority's Local First Inclusion programme.



Norfolk County Council's policy is to expand schools that are rated 'Good' or 'Outstanding' by Ofsted. Toftwood Infant School was inspected in December 2023 and rated Good. Toftwood Junior School was inspected in January 2020 and rated Good.

The cost-effective provision of high quality educational places is central to meeting the County Council's objective of ensuring inclusion and high standards of achievement for Norfolk learners with SEND.

This proposal offers parents access to more specialist resource base places in Norfolk, reducing the travel time for children and young people living locally.

**8. Will there be any effect on other schools, academies and educational institutions within the area?**

We cannot foresee any impact on any other schools, as this proposal provides additional places which removes the pressure of meeting the needs of pupils in mainstream schools who are currently waiting for additional support.

**9. Project costs and an indication of how these will be met, including how long term value for money will be achieved.**

This Base will be located between Toftwood Infant School and Toftwood Junior School, on the Infant top field, with its own car part and drop off area. It will be a new building creating an enabling environment for Base learners in a bespoke accommodation base.

All capital costs for the new purpose-built accommodation will be funded from Norfolk County Council's Local First Inclusion SEND Improvement Programme, to ensure there is the appropriate accommodation. Target opening is September 2025.

Long term value for money will be achieved as there is greater capacity to meet the needs of children with SEND locally.

**10. Will this definitely happen?**

No. There is a statutory process we must follow to make this type of change to schools.

**10. Implementation date and proposed stages**

If the proposal is agreed by the local decision maker; the Executive Director of Children's Services, Norfolk County Council, it is intended that the significant change will be implemented from 1 September 2025.

**11. Related proposals**

There is no other proposal linked to this proposal.

**12. How can I make my views known?**

Any person may object to, express support for, or make comments on the proposals, within 4 weeks of the publication of the statutory public notice by:

- Sending an email to; [schoolreview@norfolk.gov.uk](mailto:schoolreview@norfolk.gov.uk). Please put the school name in the heading of the email.
- Writing to: School Organisation Team, FREEPOST, 1H 2076, Lower Ground Floor, County Hall, Martineau Lane, Norwich, NR1 2BR. You don't need a stamp.

### 13. What happens next?

The following table sets out the key dates for the consultation and decision making. At any point the proposal may be withdrawn. The dates set out below meet the Department for Education requirements for consultation on school organisation proposals.

<b>School organisation process</b>	<b>Date</b>
Public Notice published	26 February 2024
Statutory consultation (representation stage)	26 February – 22 March 2024
Decision required, no later than	22 May 2024
If approved, the Base starts	1 September 2025

**Consultation report to the Executive Director of Children’s Services for permission to publish a statutory public notice**

**The proposal;**

- To establish a 16 place Social Emotional and Mental Health base at Toftwood Infant School and Toftwood Junior School, Dereham.  
These changes would come into effect from 1 September 2025.

<p>Reason for the proposed changes</p>	<p>This proposal is part of Norfolk County Council’s Local First Inclusion Programme as a priority for development.</p> <p>Norfolk County Council does not have enough local specialist special educational needs and disability (SEND) provision in mainstream schools. Our research has identified the SEND need and the location areas. These Bases located in mainstream schools enable all children and young people with SEND to get a consistently high-quality education with the right support for their needs in their local area first.</p> <p>This proposal builds on the 31 specialist resource bases attached to mainstream schools across Norfolk, many established during the Phase 1 SRB programme/ expansion started in 2019, with some still in development.</p> <p>We have identified further priority areas for new or expanded Bases, as part of Phase 2, including Social, Emotional and Mental Health bases in the Dereham area which can be provided by Toftwood Infant and Junior School Schools. The consultation document is available at Appendix A.</p>
<p>Consultation details</p>	<p>The consultation was delivered, as set out by the DfE statutory guidance ‘Making significant changes (prescribed alterations) to maintained schools’, January 2023. A consultation was held from 8 January 2024 to 16 February 2024. A total of 829 consultation documents were sent to governors, staff and parents at Toftwood Infant and Junior Schools and key stakeholders (full list is in Appendix B). A consultation event was held on 17 January 2024, in person, supported by the Headteacher, Deputy Headteacher, SENCO and School Organisation Manager, Norfolk County Council. No one attended. An online survey was established to collect responses. The consultation was promoted widely, via the county council website and Federation websites. The Consultation report is available in Appendix B.</p>
<p>Number of responses</p>	<p><b>12</b> responses</p>

Summary of views expressed in favour of the proposal 12 responses (100%)	<ul style="list-style-type: none"> <li>• Benefit to help children that require extra support and care (8 respondents)</li> <li>• Good to have this as local provision for local children (3 respondents)</li> <li>• Addresses shortage of these school places in Norfolk (1 respondent)</li> </ul>
Summary of views expressed against the proposal	<ul style="list-style-type: none"> <li>• No responses expressed against the proposal</li> </ul>
Commentary	<p>The consultation has been run in accordance with the DfE guidance. The response rate is 1.4%. Of those who responded to the consultation, there is strong support for this proposal; 100% respondents strongly agree or agree with the proposal.</p> <p>No one attended the consultation event.</p>
Resource implications	Norfolk County Council will be funding the new purpose built building from the Local First Inclusion Programme.
Recommendation	<p>All those who responded to the consultation, are supportive of the proposal and see the benefits of this provision. The proposal is also supported by governors and staff at the school.</p> <p>The proposed SEMH base is part of the Council's Local First Inclusion Programme and would meet the need and location in Dereham for this provision.</p> <p>Toftwood Infant School was inspected in December 2023 and rated Good. Toftwood Junior School was inspected in January 2020 and rated Good.</p> <p>It is recommended for Norfolk County Council to <b>proceed</b> to the statutory public notice stage of the school organisation process, subject to the planning permission application.</p>

I give permission for a public notice to be issued on the proposal to;

- Establish a 16 place Social Emotional and Mental Health Base at Toftwood Infant and Junior School, Dereham

These changes would come into effect from 1 September 2025.



Signed: pp

James Wilson (Director Sufficiency Planning and Education Strategy)

On behalf of Sara Tough (Executive Director of Children's Services)

Date: 20/02/2024



## **Consultation on a proposal to establish a 16 place Social Emotional and Mental Health base at Toftwood Infant School and Toftwood Junior School, Dereham from 1<sup>st</sup> September 2025.**

### **Our proposal**

Norfolk County Council would like to hear your views on our proposal for Toftwood Infant School and Toftwood Junior School, Dereham, to establish a 16 place Social Emotional and Mental Health Base, from 1 September 2025. There will be 8 places for Key Stage 1 children and 8 places for Key Stage 2 children.

We appreciate that children and young people with social, emotional and mental health needs can struggle to engage with learning and cope in a classroom without additional strategies and interventions. A Base can support children to overcome their barriers to learning, to be better able to cope and to be re-integrated into a mainstream setting, in which they can achieve their potential.

The Base will be managed by the Headteacher and governing body of Toftwood Infant and Junior School Federation.

This has been identified in Norfolk's Local First Inclusion Programme as a priority for development. The places will be allocated through Norfolk County Admissions processes will grow up to full capacity through this admissions process.

### **What are the benefits of this proposal**

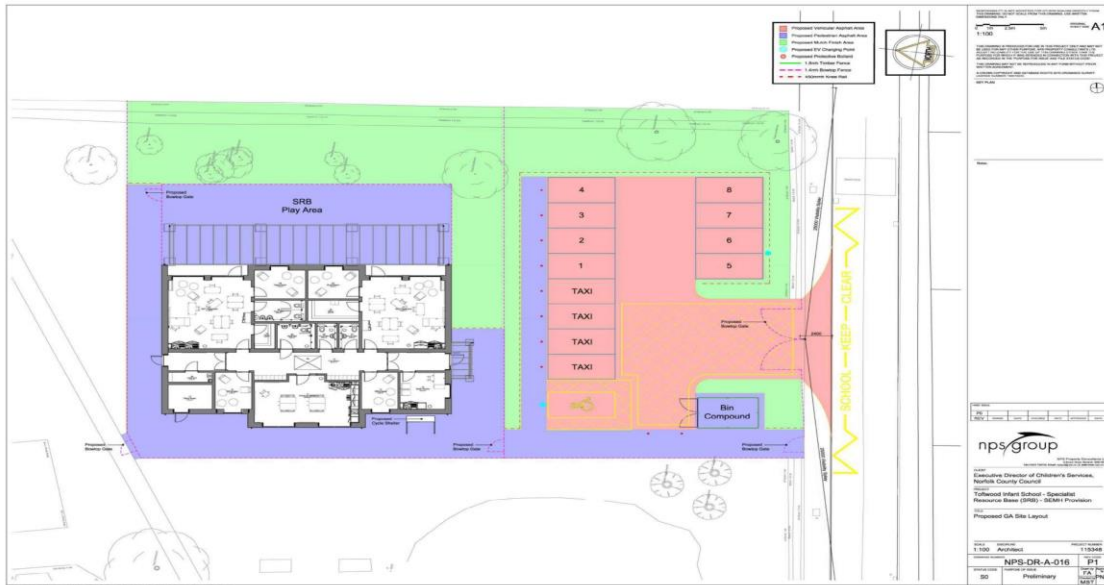
The main driver for Norfolk County Council and the governors at Toftwood Infant and Junior School Federation, is to meet the increased demand for specialist educational provision within our area, to best meet the needs of our most vulnerable learners.

We feel our proposal would benefit children and young people because it will:

- support more pupils with special education needs and disabilities to be educated and thrive in their local school and community;
- enhance pupils progress by effectively meeting their individual social, emotional and mental health needs;
- help facilitate better access to the curriculum and support pupils to achieve their potential;
- ensure that needs can be met locally avoiding the need for pupils to spend unnecessary time travelling to an appropriate school further away. This is better for young people and saves the taxpayer money in transport costs;
- increase the availability of places to meet the needs of pupils with SEND;
- address identified geographical, and age and phase gaps in Base provision as identified in Norfolk's SEND Strategy;
- support the sharing of expertise and good practice as part our school.

## Information about the proposed base

This will be a new purpose-built building with two classrooms, breakout and flexible spaces for teaching, along with administration space, toilet and practical teaching spaces.



It will be located between Toftwood Infant School and Toftwood Junior school, on the Infant top field, with its own car parking and drop off area. There will be an opportunity to have your say on the building during the planning application stage, which is due to take place early September 2024.

## Capital costs

All capital costs for the new purpose-built building will be funded from Norfolk County Council's Local First Inclusion Programme, to ensure there is an enabling Environment.

## How can you have your say

We will be holding a drop-in event where you can come and find out more about this proposal and look at the proposed plans for the capital project:

- Wednesday 17 January 2024, 9 – 10am at Toftwood Junior School

If you are unable to attend this event, but would like to comment on our proposal please:

- complete the attached form and hand it to the school office
- or email [schoolreview@norfolk.gov.uk](mailto:schoolreview@norfolk.gov.uk)
- or access our online survey:

<https://norfolk.citizenspace.com/childrens-services/toftwoodbase>

**We need all responses by 12 noon, 16 February 2024.**

## What happens next

As the local decision maker for school organisation, the Director for Children's Services will review all the comments made during this consultation and decide whether to proceed to the statutory public notice stage for this proposal.

Appendix B

<b>Summary analysis of responses for Toftwood Infant and Junior Schools</b>									
Total number of responses = 12									
Method of response									
Online		Letter				Email			
12									
Respondent * please note respondents could tick all that apply									
Pupil	Parent/ Guardian	Member PTA	Staff	Governor	Local resident	Local business	Local sports group	Local commun ity group	Not answered
	11 (92%)								1 (8%)
<b>Response Analysis – How far do you agree or disagree with our proposal to establish a 16 place Social, Emotional and Mental Health base from 1 September 2025? *please note respondents could tick all categories that apply - % of all respondents</b>									
		Strongly agree	Agree	Neither agree or disagree	Disagree	Strongly disagree	Don't know		
Total		10 (83%)	2 (17%)						
Pupil									
Parent/Guardian		9	2						
Member of the PTA									
Member of Staff									
Governor									
Local resident									
Local business									
Local sports group									
Local community group									
Other		1							
Summary of views supporting the proposals – 12 respondents									
It's an amazing opportunity for those children who need it.									
I think it's a good thing to have in the community									
I strongly agree. My son has hearing loss so has fallen behind on speech and in the classroom. Therefore he needs more one to one and this would be a great base for them to do this.									
This can only be a benefit to help children that require extra support and care.									

Any additional support and help available to children is never a bad thing! Great idea!	
Toftwood learning structure is high speed and overwhelming at the best of times even for neurotypical students. Witnessing the speed of the home learning lessons was upsetting enough, and having an autistic child who attends and struggles is also upsetting when they're not given the time they need to either grasp a concept of work, or even complete their cycle of producing work required, due to pace of lessons. An SRB would be amazing to have so children can still access learning.	
Shortage of places across the county and I have seen friends children at this school have difficulties as a result. A local provision for such a large town is long needed.	
Improved facility for those in need makes sense. Considering Dereham is central in Norfolk too. However has any consideration for the old Fred Nic's site been thought of? Fred Nics will close and relocate in the near future, could this be sited on any of that land to avoid reducing the available space for the infants school?	
As a parent of a child with ASD I can see how this would be of great benefit to children in the local area.	
Although my child doesn't have any SEN, I can see a huge benefit to those children and families who need this type of setting. It can only be a good thing for the school, children and families.	
I understand the need and advantage of offering this service.	
This helps address the shortage of such school places in Norfolk.	
Summary of views against the proposals – No respondents	

**Other comments or suggestions you would like to make to help us with this decision and in planning for the future provision of the children.**

I hope the infant school are still left with a decent amount of playing field for their outside time.	
Absolutely NO applied behavioural analysis (ABA) based techniques with disabled children. They are not dogs who can be trained to conform to neurotypical behaviour, they are wired completely differently. ABA is soul destroying and seriously detrimental. They need altered learning to support them and make them comfortable, and never forced to do something that's overwhelming. A child who is pressured and stressed in to producing work is not going to learn anything and only inflict trauma which will cause brain damage. My daughter is already traumatised of school because she has been too overwhelmed and pushed in to doing things.	
Ensure the old Fred Nic's site has some consideration for it's future, so doesnt end up a wasted empty place like the old London Rd Childrens Centre buildings are now.	

**List of stakeholders who were sent the consultation document**

Parents, staff and governors, Toftwood Infant School  
 Parents, staff and governors, Toftwood Junior School



Trust Norfolk SEN  
Dereham Neatherd High School  
Enrich Learning Trust  
Fred Nicholson School  
Northgate High School  
Unity Education Trust  
Dereham Church Infant and Nursery School  
Dereham Church of England Junior Academy  
DNEAT  
Garvestone Primary School  
Grove House Infant and Nursery School  
Hockering CE Primary School  
Trinity Federation of Church Schools  
Kings Park Infant School  
Mattishall Primary School  
Synergy MAT  
North Elmham CE VA primary School  
Flourish Federation  
Scarning VC Primary School  
Swanton Morley VC Primary School  
Thomas Bullock Primary Academy  
Yaxham Primary Academy  
St Benets MAT  
County Councillor  
Dereham Town Council  
George Freeman MP  
Breckland District Council  
District Councillors  
William Cowper Pre school  
Hoots  
Magic Tree Day Nursery  
Grove House Infant and Nursery School  
London Road Preschool  
Little Footsteps  
Little Owls Scarning  
Kings Park  
East Dereham Nursery  
Scarning pre school  
Shipdham pre school  
Rocking Horse Day Care  
Little Swans  
Little Footsteps Mattishall  
Beetley Pre school  
St Marys  
Bishy Barnabees  
Noahs Ark  
National Education Union Norfolk  
Diocesan Director of Education  
Diocese of Ely  
Diocese of East Anglia

Educate Norfolk – (Secondary)  
Educate Norfolk – (Primary)  
Unison  
NAHT  
NASUWT  
NEU (ATL section)  
Voice the Union  
GMB  
ASCL

### **Consultation Event**

A consultation event was held on 17 January 2024, in person at the Junior school, supported by the Headteacher, Deputy Headteacher, SENCO and School Organisation Manager, Norfolk County Council. No one attended this event.

### **Who responded to the online survey?**

The majority of respondents were parents/guardians (11 respondents). There were 5 parent/guardians of children at the Infant School (42%) and 5 parents/guardians of children at the Junior School (42%). There was one parent/guardian with children at both schools (8%).